



# NEWSLETTER

Heidelberg & Districts Tennis Association  
AUTUMN 2025

## COMMITTEE

President – Jenny Cox  
Secretary – Chris Jeffery  
Treasurer – Chris Groves  
Tues Secretary – Leanne Kendall  
Thur Secretary – Lorraine Tancredi

## 2025 COMPETITION COMMENCEMENT DATE

Tuesday 4 February  
Start time: 9:30am  
Finish time: 2:00pm

## 2025 TERM DATES AND HOLIDAYS

### Term 1

28 Jan to 4 April

### School Holidays

7 April to 18 April

### Term 2

22 April to 4 July

## FINALS

Semi Final – 3 June  
Prelim Final – 10 June  
Grand Final – 17 June

## SPRING 2025

Entries close 10 June  
Season starts 22 July  
Enquiries: Leanne Kendall  
(0403 303 214)

## NEWSLETTER COORDINATOR

Raelene Craven

## PRESIDENT'S REPORT

### Jenny Cox

2025, a new Tuesday season and a new newsletter!

Welcome to our Third Newsletter!

This time we include our first contribution from a Club – Ros Marshall of Rosanna. Thank you Ros. Everyone please join in and send your contributions to Raelene so that we can all share in your tennis stories. Although certainly not amusing at the time after you have calmed down the things that are thrown at you do have a funny side and if you share your stories with us we certainly can see the funny side as they resonate with us.

Our last newsletter reflected on the trials that we all know too well of desperately trying to find an emergency to get a team to the courts and this time on the trials you can face once you actually get there with parking and from Council workers, protesters and who knows what. Playing tennis is the easy part of Tuesday tennis – there is so much more to it than the tennis.

Melbourne's weather is something else we have to contend with on Tuesdays. Over summer remember to drink plenty of fluids, apply sunscreen, wear a hat and sit in the shade where possible – please just be sensible and look after yourselves. Entoutcas courts need regular watering, particularly after a hot, windy spell – without watering they can be very slippery and we do not want anyone to fall.

Enjoy our newsletter and the Autumn Season.

# TUESDAY SECRETARY'S REPORT

## Leanne Kendall

This Newsletter includes information on rules regarding SUBSTITUTE PLAYER and BALL ON COURT.



Throughout the season, I am often approached to clarify different areas of the By-Laws and Rules of Tennis. Most of these discussions are usually just to reassure coordinators, captains or players of the correct interpretation of specific rules and how to implement these in various situations that may arise. I am always happy to help solve these queries and welcome any questions. The ITF Rules of Tennis is now on the HDTA website and there is also an app for your phone. Happy reading!

**Looking forward to a great Autumn 2025 season – not too hot, too humid or too wet!  
Just a fabulous season for tennis.**

## Substitute Player

The Committee wishes to remind all players that there is **“NO injury time”** when arranging a substitute player to continue in the match.

### **By-Law 12 e) reads:**

e) A substitute player may, if eligible, take the place of any player unable because of illness or other emergency to take part in or continue any match, and play shall continue on that day from the last completed point, whether on that day or a later day.

Should no eligible substitute be ready to play when required, the games and sets unable to be played shall be forfeited to love.

‘When required’ in this context means ‘immediately’. The substitute has to be ready to play straight away or the games and set are forfeited. If the substitute is not at the courts, the current set should be forfeited but the substitute can play the subsequent sets if she arrives before they are due to start. There is no mention of “injury time”. In practice the Committee would expect most teams to be understanding and to be prepared to give a little time (eg to grab a racquet and tie the shoelaces if already at the venue).

## BALL ON COURT

**The Committee refers to Rule 23 from the ITF Rules of Tennis (see HDTA website)**

**23. THE LET** In all cases when a let is called, except when a service let is called on a second service, the whole point shall be replayed.

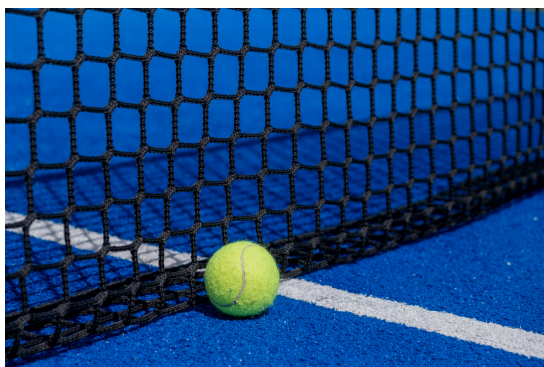
**Case 1:** When the ball is in play, another ball rolls onto court. A let is called. The server had previously served a fault. Is the server now entitled to a first service or second service? Decision: First service. The whole point must be replayed.

**Here are the Rules of Tennis for matches played without a chair umpire**

**13)** Where a ball interrupts play, either by rolling/bouncing onto the court, and/or creating a visible interruption behind the court a let should be played. Either player can call a let in these circumstances provided they do so in a timely manner. Where this is between a 1st and 2nd serve, a second serve only should be played.

To help clarify the above rules, when a ball enters the playing area, any player on the court affected may call a let/ball on court in a timely manner. Players cannot call a Let from another court. If an unsuspecting player is in danger of injury, then it is reasonable for anyone to call it to their attention from another court, but only if it poses a real danger.

**Please use your judgement when determining if a ball is dangerous or interfering with a match when offering an appropriate “warning” for safety reasons.**



## Heat Out (By-Law 13a)

HDTA will be required to use the Bureau of Meteorology website [www.bom.gov.au](http://www.bom.gov.au) to obtain temperature readings for Viewbank.

Open the above website and go to "VIC", dropdown box appears.

Select "Melbourne Observations". Scroll down to "Viewbank" where the current temperature will be displayed and updated every 10 minutes. The match must be cancelled once the temperature reaches **31.5 deg c**. Please note the time of this reading on scorecards and TROLS. Opening "Viewbank" will show the temperature range in 30 minute intervals but for a more up to date reading, please use the previous screen.

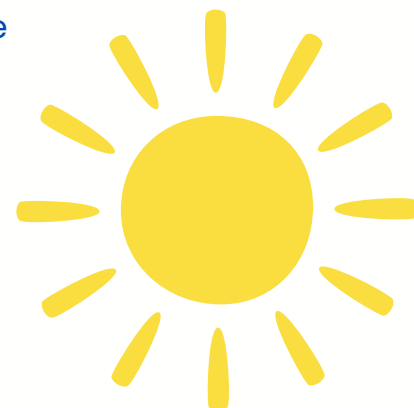
**Other mobile phone weather apps are not to be used for cancelling matches.**

## Rain or Frost (By-Law 13a)

Matches can be cancelled due to rain or frost from 8am by mutual agreement between the two captains with or without attendance.

If there is no mutual agreement to cancel, attendance is required.

If play has not commenced and courts are not playable by 11am the match is cancelled and is a draw.



## REMINDER – YOU CAN PLAY WITH THREE PLAYERS!

Since the introduction of the 4-player format on Tuesdays the rule is teams may play one player short (with a \$5 fine) but have to forfeit if they do not have at least 3.



## SPRING 2024 RESULTS

Congratulations to the following Premiers and Runners Up teams

**Section 1** – Plenty (P) and Karingal Drive Gold (R)

**Section 2** – Whittlesea (P) and Bundoora (R)

**Section 3** – Karingal Drive (P) and Montmorency (R)

**Section 4** – Diamond Creek (P) and UCTC-DC (R)

**Section 5** – Epping (P) and Rosanna Red (R)



## SCORECARDS

Tuesday 4 player scorecard *Revised 2023* is on the HDTA website and available for printing.  
[www.trols.org.au/hdta/](http://www.trols.org.au/hdta/)

# ANYONE FOR TENNIS?

by Ros Marshall , Rosanna Tennis Club

Tuesday 19th November looked like a perfect day for tennis. Max 18, gentle cool breeze blowing. Semi-final scheduled for Section 5 – Rosanna Red v St Francis Xavier. Rosanna TC is in De Winton Reserve and parking is usually no problem, especially since many city workers are no longer parking at Rosanna Railway Station for their commute. On this Tuesday, they all decided it was to be an office day.

Banyule Council also decided it would be a perfect day to top-dress the oval. They parked their long flat-bed trucks in the spaces usually reserved for tennis and lawn bowls players. Some of us got a parking spot, others had to park further away and walk.

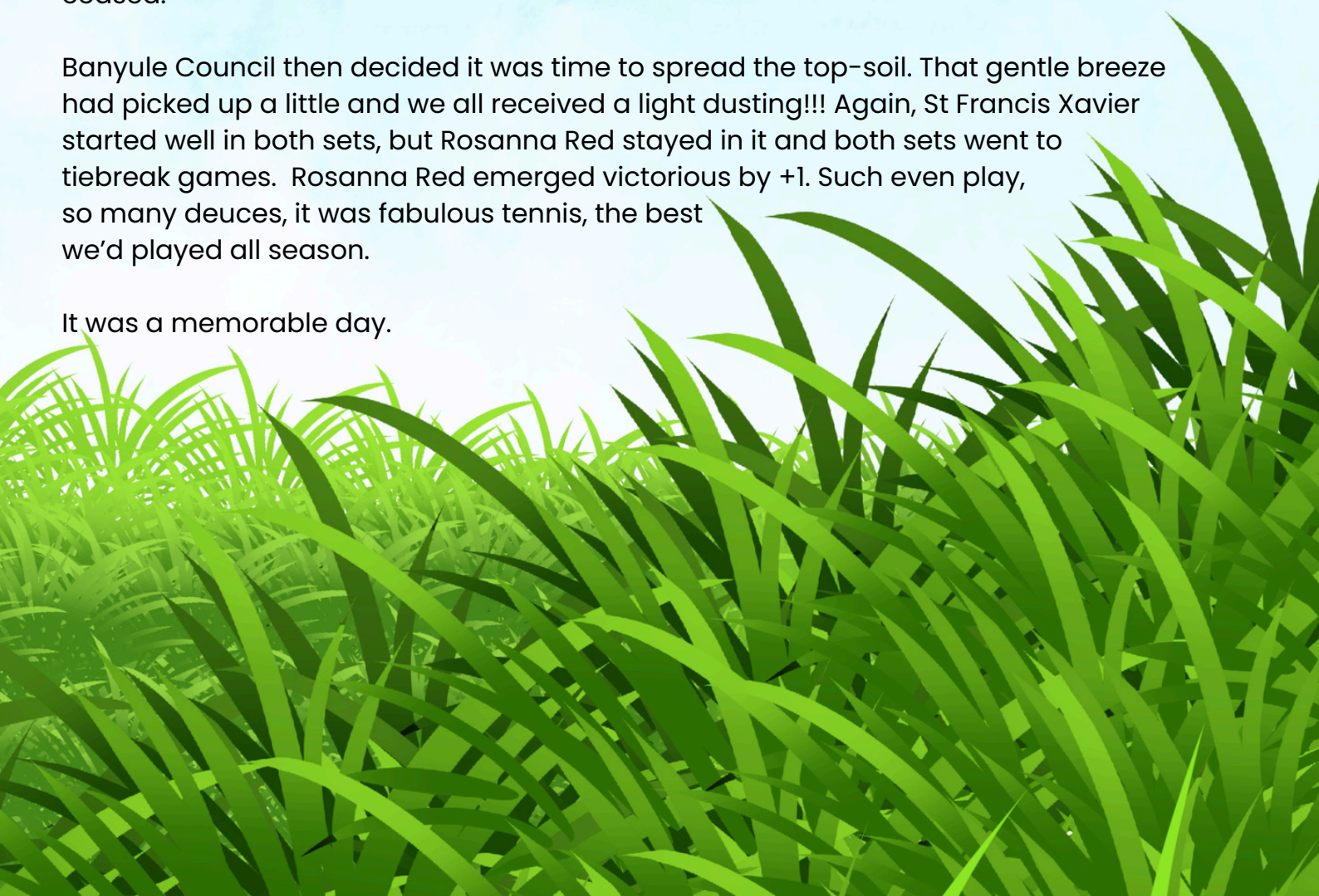
Sets 1 and 2 commenced, accompanied by the “gentle” tones of several mowers and other equipment. Rosanna did best and those sets finished with Rosanna being +5.

Soon after Sets 3 and 4 commenced, a few horns started blaring – road rage? Accident? NO – tip truck drivers were protesting low wages and had parked along Rosanna Road, with permission from the police. The horn blowing continued for nearly an hour!! It was multiple horns and they weren't in tune. Obviously, St Francis Xavier had cooler nerves and won both sets. Rosanna Red held the narrowest lead of +1 at the end of the fourth set.

Sets 5 and 6 were going to be tense – it was a knockout semi-final. The horns had ceased.

Banyule Council then decided it was time to spread the top-soil. That gentle breeze had picked up a little and we all received a light dusting!!! Again, St Francis Xavier started well in both sets, but Rosanna Red stayed in it and both sets went to tiebreak games. Rosanna Red emerged victorious by +1. Such even play, so many deuces, it was fabulous tennis, the best we'd played all season.

It was a memorable day.



# RECYCLE AND CREATE NEW LIFE FROM PRE-LOVED SPORTS FOOTWEAR

**Did you know** that each year, 110 million shoes are imported into Australia, but only 1% are collected and recycled after use and shoe components can take up to 1000 years to decompose?



Tread Lightly is a national recycling initiative that takes unwanted sport and active lifestyle footwear and responsibly recycles it here in Australia to give it new life.

## How it works

- Shoes are donated
- Shoes are collected, sorted and stored
- Shoes are turned into recycled crumb
- New products are made eg retail flooring, anti-fatigue mats and other products

## Do you have unwanted tennis or sports shoes that could be recycled?

Drop-off units are available at over 900 sports, activewear, and footwear retailers across Australia, including The Athlete's Foot, Puma, Nike, and Rebel (Greensborough, Northland, Doncaster, Eastland and Epping) among others.

**We can all do our part to reduce our collective environmental footprint by recycling. So, next time you're out shopping, please remember to take those old tennis shoes with you!**

If you would like more information about Tread Lightly or their collection sites please visit

<https://treadlightly.asga.com.au/collection-locations/>

