



# CONTENTS

	Page
FORWARD	2
INTRODUCTION	3
TEWANTIN EARLY DAYS	4
OUR CLUB - The Beginning	6
DEVELOPMENT OVER TWENTY FIVE YEARS	8
TWENTY FIVE YEARS OF TENNIS	14
<ul style="list-style-type: none"> <li>- <i>Social Tennis</i></li> <li>- <i>Club Championships</i></li> <li>- <i>Best &amp; Fairest - Juniors</i></li> <li>- <i>Competition</i></li> <li>- <i>Coaches</i></li> <li>- <i>Junior Development</i></li> </ul>	
CLUB SERVICE	22
<ul style="list-style-type: none"> <li>- <i>Committees</i></li> <li>- <i>Highlights</i></li> <li>- <i>Life Members</i></li> <li>- <i>Club Patrons</i></li> <li>- <i>Auditors</i></li> <li>- <i>Newsletter</i></li> </ul>	
IMPRESSIONS & MEMORIES	26
THE FRIENDLIEST CLUB IN THE WORLD	29
FUTURE DEVELOPMENTS	32
PRESIDENTS & COMMITTEES	33
CLUB CHAMPIONS	35
ACKNOWLEDGEMENTS	40

## FORWARD

**I**t is my pleasure to introduce this publication on the history of the **Tewantin Tennis Club**. A lot of effort has gone into producing this book, so I sincerely hope you enjoy reading about our Club's beginnings. I would especially like to thank **Geoff Swartz** for his work in compiling this book. Geoff has been a wonderful worker for our Club and typifies the spirit of our members who have worked so hard to build this Club. My thanks also go to **Rhona Vickers** who has worked tirelessly at her computer to type, edit, scan and bring her considerable skills to the fore. Thanks also go to **John Morgan** for the artwork on the front and back covers, and to everyone who donated photos and articles. *Inevitably we will have made some errors or omissions, so please let me apologise in advance, we have done our very best.*

In the past 25 years our Club has grown and matured and now has a membership of more than 280. We have eight supergrass courts, and cater for all standards of tennis, with social tennis every day of the week. We have the strongest Junior Club on the Coast and we have the reputation of being the *"friendliest club in the world"*. Not bad for such humble beginnings! My term as President will end this year and I will join the long list of pasts. However, I feel very proud to be associated with the Tewantin Tennis Club, and the wonderful friendly people who are the members.

### ***What else happened in 1980.....***

*Do you remember that our Prime Minister was Malcolm Fraser - he told us that **life was not meant to be easy?** That was also the year when baby Azaria Chamberlin disappeared from a campsite at Ayers Rock. In 1980 **Venus Williams and Martina Hingis** were both born. The big movie in 1980 was - **The Empire Strikes Back**. It was also the year that **John Lennon** was shot and **Ronald Reagan** defeated **Jimmy Carter** for President of the USA. Australia's SBS television network began and .....back here in Tewantin thirty-three people, including **Barry and Fay Furner, Estelle Busted and Ellen Dennien**, attended a public meeting on **29<sup>th</sup> April, 1980** to form a **Tewantin Tennis Club**.*

We sincerely thank them.

**Roger Hunt, President (2002-2005)**

## INTRODUCTION

The Tewantin Tennis Club Incorporated was established in 1980 and now celebrates its 25<sup>th</sup> Anniversary. Our Members are proud of our Club, its spirit and how it developed.

Gus Meyer, a Past President, once said, *"Our Club is a unique Tennis Club and certainly the only one in the region that provides such a variety of tennis on so many days of the week and in such a special atmosphere"*.

Our Committee, however, decided that our Silver Jubilee Celebration was a good time for a more detailed history while we can still remember, and to honour the foresight and tireless work of many of our members, especially our First President, Barry Furner.

Ken Melrose, our late Vice President, sadly was unable to be co-author of this book due to his untimely death.

**Geoff Swartz**  
Author



*View of Courts and Clubhouse in 1995,  
courtesy of Mike Hagan*

At our 20<sup>th</sup> Anniversary, President John

Woodrow, trumped this with a new title, *"The Friendliest Club in the World"*. (see newspaper cutting opposite.)

This in a few words gives the history of our Club, so you don't need to read any further!



## TEWANTIN EARLY DAYS

In 1863 "white" settlement commenced at Tewantin following the discovery of valuable timber, and in 1866 the first raft of logs was floated down the Noosa River from Cootharaba to Tewantin, and thence to Brisbane by paddle steamer.

The name "Tewantin" comes from the Aboriginal name for a place of "dead logs".

However, things became more hectic with the 1867 Gympie Gold Rush with Tewantin initially the nearest port on the supply route. In 1871 Tewantin Township was surveyed and the first Provisional School opened near "Harbourtown" before shifting in 1887 to its present site. By 1880 Tewantin was humming – five hotels but no tennis courts – yet!

Apart from private tennis courts the first "public" tennis court was probably a "dirt" court at Tewantin Primary School, built at the turn of the Century. This court was relocated before the two present hard courts were built on the extended school grounds.

The first Tewantin Tennis Club was established near the present "Harbourtown" in the 1920's, originally as a clay court, but was soon cemented because of flood damage.

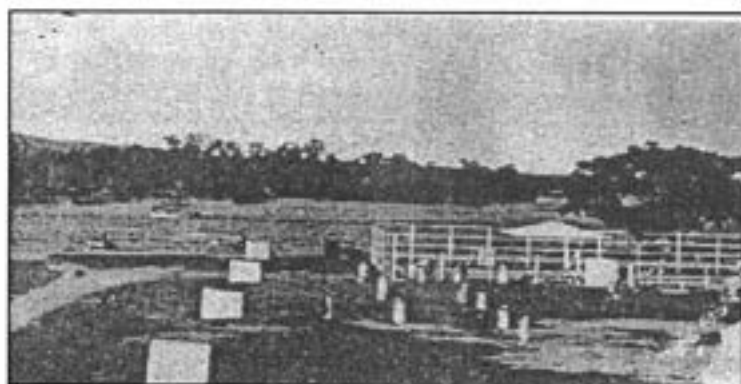
The following 1929 photograph shows the fenced court and tiny club house beside the river swimming enclosure and a historic fig tree, taken on the day of the opening of the first bridge to Noosaville, in 1929.

In its heyday, the first Tewantin Tennis Club had over 100 members with numerous fixture teams. The court was lit for night use in the early 1950's, soon after power came to Tewantin in 1947.



*Opening of Doonella Bridge, Tewantin, by T.M. Burke, 1929*

George Pearce, who still lives in Butler Street, joined the Club in 1947. By 1950 the Club had 104 members with four fixture teams.



*The Leisure Centre of the Noosa Area at Tewantin*

The Club relocated to the concrete court at Noosaville, adjacent to the Old Yacht Club site, and became the Tewantin Noosa Tennis Club.

Some years later, mainly due to the efforts of Lo Schielein (a member of our Club), the Noosa

Tennis Club commenced at Noosa Junction, and continued there until the development of Noosa Fair.

One of the highlights for the Club was when Ken Gilcrest of Laguna Guest House in Hastings Street, brought some of the top State tennis players up for the weekend. The format included a display match at Tewantin followed by refreshments at the Royal Mail.

The Noosa Tennis Association was formed to organise inter club matches with the name changed later to the Noosa District Tennis Association.

Our Tewantin Tennis Club holds an historic cup, The Rosalmond Cup, won three years in a row in the A grade fixtures by a Tewantin Club Team presented in 1950. Some of Barry Fumer's family were in this team.

Later in the 1960's the court was removed due to Council development in the harbour area.



*Rosalmond Cup, 1954*



## OUR CLUB - THE BEGINNING

Thirty-three people, including 2004/05 members *Barry and Fay Furner, Laurel Layt, Estelle Busteed and Ellen Dennien*, attended a public meeting on 29<sup>th</sup> April, 1980 to form a Tewantin Tennis Club. Val Smart chaired the meeting and Barry Furner gave an address on the rationale for the formation of a Club.

Reference was made to the distance to the nearest Club at Noosa, the restrictions on club membership and the need for junior coaching of young Tewantin players.

An *Interim Committee* of six, **Jim Sloman, Barry Furner, Ray Brady, Joan Furner, Peter King and Coral Anderson** was elected. The Committee was directed to draft a set of rules and a Constitution, and to

have discussions with the Noosa District Sports Complex Committee to obtain a site for a Tennis Club on the complex at Tewantin.

The first general meeting was held on 3<sup>rd</sup> **June, 1980** with 17 attending. Ray Brady reported for the Interim Committee and it was confirmed that the new Secretary write to the Noosa District Sports Complex to apply for a lease.

The new Club was named "*Tewantin District Tennis Club*", and the Constitution was approved. The Club's name changed to "*Tewantin Tennis Club Incorporated*" early 1985.

It was decided to approach the Tewantin

The first Committee members were:-

President	- Ray Brady,	Vice President	-Barry Furner
Secretary	-Coral Anderson	Treasurer	-Fay Furner
Patron	-Dr Geoff Bowden	Hon. Auditor	-Ray McCaul

Committee Members:*Peter King, Jim Sloman, Ron Blakeney, Joan Furner, Steven Jenkins, Bill Pendlebury.*

Trustees: Jack Buchanan, Mr Whitehouse, Ron Blakeney, Dr Geoff Bowden.

State School to use their two hard courts until Club courts were built, and a school room for monthly meetings.

The following newspaper report was published after this meeting:

considerable involvement with the establishment of our Tennis Club in the early stages. Don was well known in the community, and he supported a number of sports. He carried out the negotiations with the Noosa District Sports Complex to speed up the approval of the Tennis Club lease.

## Tennis club formed for Tewantin area

A meeting of Tewantin tennis enthusiasts last week formed the Tewantin District Tennis Club.

The decision was taken after players expressed concern about the difficulty of joining the Noosa Heads club.

Members of the new club enjoyed social tennis last Sunday on the courts of the Tewantin State Primary School.

These courts will become their playing base pending permission being obtained to lease land for courts on the Noosa Sports Complex. The club has already

submitted an application for a lease.

Membership roll is open - \$20 a year for senior players, \$10 for juniors under 17.

Players of all standards beginners to experienced will be welcomed.

Dr Geoff Bowden was elected club patron at the meeting with Mr Ray Brady president, Mr Barry Furner vice-president, Mrs Coral Anderson secretary and Mrs Fay Furner treasurer.

Management committee meetings will be held at Tewantin school on the first Tuesday of each month.

Secretary Mrs Anderson said once the club had its own courts and facilities it was hoped to form a Tewantin District Tennis Association and would then be able to play in association fixtures with players from other districts.

Enquiries about membership should be directed to Mrs Anderson (telephone 47 1870) or any of the office bearers.

The club's first fund-raising venture will be a stall at the St Mary's hall flea market, Tewantin, on July 14.

In December the lease application was approved and clearing of the site for court construction was commenced. Ray Brady resigned as President and Barry Furner was elected the new President and Geoff Flowers Vice President.

It was noteworthy that a \$180 cheque was received from money held in trust from the original Tewantin Tennis Club!

Don Woodward, a local builder, had

Later he helped the main builder, Jim Sloman, with the construction of the Clubhouse.

Don tragically died in the mid eighties, and in remembrance of his work with the Sports Complex and a number of sports clubs, an area of bushland immediately to the south of the Tennis Club was named *"The Don Woodward Memorial Environmental Park"*.



## DEVELOPMENT OVER TWENTY FIVE YEARS

By July 1981, with many working bees, four clay courts were completed and a surrounding fence erected by Club members, while 1982 saw the construction of the Clubhouse. The building work was mainly done by unpaid builder Jim Sloman, and a band of merry helpers with various skills to offer. Donations of materials, from the local business community, together with some



*Opening Day, 4th September, 1983*

energetic fundraising by the ladies of the Club, all helped to improve the Club facilities.

Membership rose to 104 seniors and 32 juniors by the end of that year, and the Club was making huge strides forward, both in terms of facilities and general Club activities.

Although by now most of the Noosa District Sports Complex had been allotted to sports clubs, the official opening occurred on the 17th April, 1982.

The Honourable J.A. Elliott, M.L.A., Minister for Tourism, National Parks, Sport and Arts named the Complex the "Sir Thomas Hiley Park" after the former State Treasurer, who had retired here, and who was very supportive of clubs, including the Tewantin Tennis Club.

Some very good tournaments and local Sunday competition tennis were in full swing, being well organised by Ron Cummings, together with his coaching programme for both senior and junior players. Also, social



*Norm Danvers operating the club roller (built by Col Lawrence and Ted Layt).*

tennis was growing in popularity, alongside mid-week competitions for the ladies.

Despite large expenditure on lighting, landscaping and ongoing work on the Clubhouse, the financial position of the Club was sound. Helped, of course, by the



*Jack Walters was a popular man at the official opening of the Club. Making a fuss of him are (Lto r.) Jenny Williams, Shirley Sinclair, Estelle Busted & Fay Furner.*

generous donations of materials and time from various members.

The official opening of the new Tennis Complex was held on the 4th September, 1983. Sir Thomas Hiley was present, while the local M.L.A., Gordon Simpson, declared the facilities open.

During 1984/85 the Club was granted its Incorporation Certificate - as was legally required. The junior teams were progressing well under the watchful eye of Sue Danvers, and in fact rounded off the

year with our No.1 Junior Team winning the finals of the Noosa District Tennis Association Tournament - 1st team playing the 2nd team!

In 1984, junior member Michelle Head became the first recipient of the Jack Walters Memorial Award for the Best and Fairest Junior of the Year. As the Club's financial situation was considered good, there were discussions regarding the laying of at least one all weather court to alleviate the loss of revenue due to bad weather and the never ending work in court maintenance. For the first time in two years the fees were set to rise to \$50 for seniors and \$10 for juniors, however, social players saw a reduction of daily fees from \$1 to 75 cents!

Around this time, the Noosa District Tennis Association became affiliated to



*Opening Day, 4.9.83. (Lto.r.) Bert Wansley (Noosa Mayor), Sir Thomas Hiley, Gordon & Norma Simpson, Barry Furner & Peter Sinclair*

Queensland Lawn Tennis Association (QLTA), and as Tewantin Tennis Club Inc. was affiliated to Noosa District Tennis, the Club automatically qualified for membership. This was good news because it meant that TTC was able to apply for subsidies for junior Training, etc.

At the same time the presiding Committee of the day was also investigating the feasibility of obtaining financial assistance from the Sports Complex for two all-weather courts. As ever, the Social Committee was very active, relentlessly fundraising by way of Games Nights, Annual Ladies Day, Christmas Party and Pie Drives.

A government subsidy of \$6,320 was received to help towards the cost of bitumen sealing courts 1 and 2 and laying super-grass. The total cost was over



*Opening of Courts 1 and 2 in 1987 laid with grass*

\$31,000 and required private loans from two members to cover the shortfall. A further \$34,000 was needed for upgrading courts 3 and 4 and subsequently a subsidy of \$6,791 was granted with the shortfall coming from private loans again.



*Opening of upgraded courts 3 & 4, 16th October 1988  
(Lto r) Noel Playford, Russell Butler, Gordon Simpson, Hazel Bottomley, Peter Sinclair*

The early 90's witnessed the retirement of Peter Sinclair after five years in the Presidency job. He said that it was time we established a strategic plan to cover the next ten years and asked, "How big do we wish to grow and how many more courts would be needed?"

He predicted a tremendous growth over the next ten years, and suggested that the Club had become the focal point of both the recreational and social life of many of its members. The 1990/91 AGM then approved the immediate installation of lights on courts 3 and 4 to provide four courts for night use - followed by the

construction of new courts (5 and 6) as soon as possible. And so, with membership now standing at 175, the construction of new courts was put in place. Grace Pearce, a valued Patron of the Club, donated \$1,000 towards the new courts, 5 and 6.

The Club was, by now, thirteen years old, and had become the prime tennis centre for Noosa Shire, with the most courts in one centre and room for further eight courts in the future. With the rapid development of the Noosa Shire, membership continued to grow yearly, and the new courts, 5 and 6, were welcome additions to this growing membership. Of course, more courts meant more maintenance and more costs, but the Club finances were being managed well and all private loans were being met on time.



*Ladies Midweek Tennis 1998  
(Back L-r) Ellen Dennien, Sue Mold, Laurel Layt, Mavis McGill, Adrienne Dick, Valmai Lynch. (Centre L-r) Betty Coe, Carolyn Pullham, Debbie Hennig, Marie McCray, Jenny King. (Front L-r) Estelle Busted, Jenny Morgan, Margaret Swartz, Joyce Goodard*

However, some high expenditure was planned for the immediate future - extending the car park, replacement of existing light poles as well as new lighting for courts 5 and 6, and refurbishment of the Clubhouse. But it was decided that for the present, until outstanding loans were repaid in full it was difficult to justify borrowing's for any major project.

Unsuccessful approaches had been made to the Department of Sport, Racing and Tourism under the Facilities Development Scheme, and Gaming Machine Community Benefit Funds, for financial assistance to establish courts 5 and 6. Advice was finally received that the rules had changed, and that direct affiliation was required with our senior body - Tennis Queensland - for any subsidy approvals.

By 1995/96, Alan Hocking had been four years in the Presidency and had seen the membership grow to just under 200, including juniors and country members. Organised tennis sessions had grown to five days a week, and the "Board System" was introduced to make life easier for selection of sets during busy sessions.

Regular Sunday social events, followed by a barbeque, were very popular and competition tennis was extremely healthy!

Comprehensive refurbishment of courts 3 and 4 was undertaken as well as new fencing. This was financed by private members loans totalling \$55,000! Once again a positive sign of commitment and dedication by the membership to the Club. Everyone was catered for at Tewantin, even the provision of a sand pit for toddlers belonging to the young mothers tennis group!

By the mid 90's, tennis was "alive and well" and flourishing at Tewantin. The Clubhouse and grounds were in excellent shape, thanks to the mainstay of ground maintenance, David Elmes.

Gus Meyer's presidency of 1998/99 was a particularly "wet one" - this was no reflection on Gus, but merely the high rainfall for that year! However, tennis sessions continued to grow at an ever increasing pace, catering for all standards



*President Roger Hunt speaking at the Opening of Courts 7 and 8*

on various days of the week. Membership was at an all time high of 250, with new applications coming in steadily. In 1999 the Noosa District Council introduced a new



*2002 Tennis Club Committee*

funding assistance scheme for sports clubs, where, if the application was considered appropriate, a grant of 30% of the projected cost could be provided, on condition that the club received a further 50% grant from another body.

The Council also requested clubs to submit Forward Planning Projects for (a) two years, (b) two to five years, (c) five to ten years, and, (d) ten years plus. Our Club proposed:- (a) upgrading courts 1 and 2, (b) clubhouse extensions, (c) construction of new courts 7 and 8, and, (d) provision of a further six courts and additional parking.

The Club reached the grand old age of 20 in 2000, and this was duly celebrated with a "birthday bash" consisting of some good



exhibition tennis, with the whole thing well orchestrated by an entertaining Peter Lynch.

In 2000 funding applications were submitted by Works Officer, Geoff Swartz, for the upgrading of courts 1 and 2 with new artificial grass and the replacement of the old wood light poles. Grants of 80% from Noosa Council/Gambling Community Benefit Fund were approved and the work completed. Also, progress was made elsewhere, with the purchase of a ride-on mower, complete with an adaption to brush the court surfaces, and the installation of a constant hot water heater in the kitchen. The Club Logo, beautifully designed by John Morgan, also surfaced at this time on the special Club shirts and caps which went on sale.

Later it was decided that, with increasing junior players, the additional courts were a



*Christmas Party December 1999  
Ray Gow and Marie McCray*



*Cllr Frank Pardon and MLA Cate Molloy cutting the  
tape to officially open Courts 7 & 8*

higher priority than the full clubhouse extensions planned, so only the verandah was added at this stage.

Courts (7 and 8) were constructed during 2003/2004 to meet the ever increasing demands of a keen membership. Noosa Council and the State Government provided a very welcome grant of \$87,000, thanks again to our Works Officer. This also covered a new power supply. The formation of a Junior Development Subcommittee, headed by Bill Lodge, during John Woodrow's Presidency, has been very effective in encouraging local youngsters to play tennis. The first Junior Championship Day was an outstanding success, involving parents and the local community in the Club. This all culminated in the Club becoming the recognised leader in Junior Development on the Sunshine Coast - a not insignificant achievement, which bodes well for the future of the Club.



## TWENTY FIVE YEARS OF TENNIS

### SOCIAL TENNIS

Social Tennis has, since the development of the Club, played an important part of Club activities. With 60% of members over 55 years of age, tennis provides a popular means for socialising as well as exercise for the "older person category". This goes a long way towards maintaining good health and quality of life.

Once the Club completed its first four clay courts regular tennis was arranged on Sunday afternoons. Morning tennis commenced on Tuesday mornings, initially ladies only, and then mixed and later on Friday and Sunday mornings.



*Social Tennis Morning 2005  
(L.to.r) Lester, John, Maggie and Suzie*

Court captains were appointed to arrange games. With the lighting of the courts night tennis was organised from time to time.



*Court Captain Shirley Sinclair arranging sets on the*

Many of today's members will remember sets organised by Shirley Sinclair up to the time when the "Board System" was introduced in 1993/94. Shirley was outstanding at balancing and organising matches.

At the same time Shirley introduced many of the Club members to "Meals on Wheels" kitchen and delivery roster. This service to the Club continued for a period of almost seven years.

With the construction of courts 5/6 in

1993/94, the "Board System", which is still used today, was introduced to relieve the duties of the court captain.

At the same time with increasing Club membership and numbers attending social days, the committee introduced graded



*Round Robin March 2001  
(front row) Rob Hogarth, Gus Meyer, Gillian Hogarth, Narelle Meyer, Ellen Dennien. (back row) Pat Sheridan & Alan Turner*

tennis mornings. This followed a number of private groups playing regular social tennis on other mornings. Today, all mornings have organised social tennis, with Monday for Advanced Mixed Tennis, Wednesday and Saturday Intermediate Mixed, Tuesdays, Fridays and Sundays Open Mixed, and Thursday Advanced Mens.

Tennis has become more popular with an increasing number of private Club groups playing on many afternoons.

The Club organised a number of social tennis special events including Christmas



*July 2002 - Men at Work!  
(l to r) Patrick Sweeney, David Elmes & Pat Sheridan*



*John, Inge, Phillip, Kurt and Roger relaxing between sets at a Social Tennis session 2005*

Breakup, Melbourne Cup Day, President's Team Versus Club Captain's Team, State or Country of Origin and Social Tennis Breakfasts. These are all popular events



*Crowd enjoying 2004 Club Championships*

that provide for the social get together of all standards of players including juniors. Our courts are also available for hire for day and night tennis.

One group of Probus members have held regular tennis/dinner meetings on Friday nights for a number of years.



*CLUB CHAMPIONS B GRADE MIXED 2000  
David Elmes/Pam Hawkins on left  
Runners Up Sandy Regan/Ken Metrose on right*

## CLUB CHAMPIONSHIPS

For twenty five years our Club has held Annual Club Tennis Championships. Singles and Doubles of Ladies, Mens and Mixed in three grades as well as junior matches, are all closely contested.

Individual Club Champions are recorded on plaques in the Clubhouse as well as in the rear of this book from 1989 onwards.

## BEST AND FAIREST – JUNIORS

Jack Walters was a life long tennis player playing up to 4 days a week before his sudden death in 1984. Although he always gave his best, he maintained that winning was not as important as playing the game in a fair and sporting manner. He was always ready to encourage and assist juniors.

As a tribute to Jack, Peter Sinclair inaugurated the Jack Walters Award for the Best and Fairest Junior. Michelle Head was the first recipient in 1985. Betty Walters is always very pleased to donate a trophy to the chosen junior boy or girl each year.

The following Junior Club Members have received the Award:

1984	<b>Michelle Head</b>
1985	<b>Roger Danvers</b>
1986	<b>Dan O'Neill</b>
1987	<b>Darryl Evertsen</b>



*Michelle Head with Betty Walters after receiving the Jack Walters Best & Fairest Award for Juniors*

1988	Barry Wills
1989	Steve Wills
1990	Joshua Gunter
1991	Chris Woodward
1992	Kellie Stirton
1993	Dominic O'Brien
1998	Tom Ibbs
1999	Amber Marshall
2000	Jonathan Hall
2001	Krysten Boyle
2002	Anthony Brown
2003	Zac Roslie
2004	Justin Harlow

## COMPETITION

Although the number of teams has varied from year to year, the Tewantin Tennis Club has entered teams in most Sunshine Coast competitions since the Club began. In fact, in 1980/81 teams were entered in the midweek ladies and the Saturday afternoon competitions. The Noosa District Tennis Association has ladies, mens and mixed night tennis, as well as a Saturday afternoon competition while the Tennis Veterans Sunshine Coast Association teams compete once a month on a Sunday.

Tewantin has regularly entered teams in the Ladies Mid Week Competition with considerable success.



*World Masters Games 1994  
(Lto r) C Wenzel, W. Jukes, A. Hocking & J. Achurch*

However, the number of interested fixture players and teams entered in other competitions has fluctuated over the years. Naturally many players retire to social tennis as they get older. There has been a resurgence in mens night tennis in the last four years since Bill Lodge began organising teams for the NDTA. More interest developed with Tuesday and



*Sunshine Coast Mid-Week Ladies Competition Tennis 1995  
(Back Lto r) Inge Feger, Rita Rowell, Linda Cardno  
(Front Lto r) Marleise Rist, Viv Matthews*



*Mixed Doubles 2004 Club Champions  
Viv Matthews & St John Tyrwhitt with Club Captain Doug  
McConnell*

Thursday night training sessions with "Super Singles" and "Deadly Doubles" with ranked players and Bill's slogan "storming to success".

## TENNIS COACHES

Since the Club began tennis coaching has been considered an important part of the Club for adults as well as juniors players.

One of our original members, Geoff Flowers, coached initially and a grant of \$105 for junior coaching was received in late 1981, following our application.

Applications for a coach was advertised in 1981 and a number of replies were received. Ron Cummins from Melbourne was appointed in October 1981. He became a

member and was very active in Club activities.

As well as encouraging junior competition and training, Ron continued coaching until 1984/85.

In 1986/87 Mark Williamson was appointed as coach. Later, Ian O'Brien, a club member, began coaching his son and soon a number of juniors joined in.

In 1993/94 coaching was revived with Steve Robertson for a few years. He had a following of a large number of juniors.

Harley Armstrong was our coach in 1996/97, while Carolyn Henley coached regularly from 1997/98 until Frank Pearce, our present Club Coach, commenced in 2000/01.

Frank is a very popular and professional coach. He works with a number of groups including adult and junior members as well as being a specialist coach for Premier League Tennis workshops and a young mother group.

Through the agency of Bill Lodge and Premier League Tennis the club has used the



expertise of former ATP professional Andrew Kratzmann and international tournament player JT Welford in special impact coaching sessions.

These coaching clinics and workshops have been an extension of the Fast Trak Junior Development programme to assist the more advanced juniors take their tennis to a higher level.



*Girls Coaching Squad with JT Welford (centre)*



*Coaching Session with Frank Pearce*



## JUNIOR DEVELOPMENT

One of President Barry Furners' original aims for our Club was Junior Development, and this has continued as an important part of our programme.

Apart from the role of Club Coaches, Committee Members and Sub-Committee Members have been appointed annually to manage and encourage Junior Development.

In our first ten years, several members, including Ellen Dennien, Kim and Daphne Wall and Sue Danvers, made an outstanding contribution by organising coaching, training and junior competition. The number of interested junior players and members has fluctuated over the years.

The Tewantin Tennis Club has continued to provide tennis courts and practice balls free of charge to a number of local Primary Schools, especially for "Sports Skill Day" and for follow up training sessions.

In the last four years there have been major initiatives in Junior Development by

President Roger Hunt and Junior Development Co-Ordinator, Bill Lodge. The Club has received a number of grants to fund junior programmes, including "Fast Track" and "Introduction to Tennis Tewantin Primary School" - mainly due to the efforts of Bill.



*Fast Track Group*

Through the support of Pat Craigie, one of our members and a men's competition player, Laguna Noosa Real Estate sponsored the 2004 Noosa District Junior Championships which were staged at Tewantin.

The Clubs 'Junior Development' programme has resulted in many successes. Two of the clubs most outstanding juniors, Anthony Brown and Justin Harlow were the finalists in the inaugural Lexus Junior Slam in 2003 which was won by Anthony. Justin then

teamed with Gareth Bertram to win the doubles. Bill Lodge reports that Tewantin Tennis has an increasing role as a "centre of excellence" for junior development on the Sunshine Coast.



*Justin Harlow executing a forehand*

Both Roger Hunt and Bill Lodge acknowledge that this development has resulted from the outstanding work and dedication of a number of people, including, coaches - Frank Pearce, Robert Furner and Andrew Kratzmann, trainers - Dianne Peterson, David Whittaker, John Gould, Justin Harlow and St. John Tyrwhitt, and co-ordinator Pauline Durham - *and a considerable band of parents and friends.*

Today the Club has in excess of 50 registered junior members, which is a 10 fold increase in three years. In 2004, Tewantin

won the Noosa Trophy Centre Award for the most outstanding club in Noosa District Junior tennis. It has won the NDTA Div. 1 junior fixtures title for the past three seasons. Of the 15 teams entered in the 2005 Autumn season, nine made the semi finals of their respective divisions, two won titles and two were runners up.

Tewantin now fields more teams in District Junior Competition than any other club. The Club has also focused on attracting and developing junior girls which has resulted in it having the largest contingent in the Noosa District playing competition. This is a key focus for the future because of the declining numbers of women and girls playing competition tennis.



*Junior Champion 2003—Zac Roslie  
with Club President, Roger Hunt*

# CLUB SERVICE

## COMMITTEES

The management and development of any organisation depends on the enthusiasm, the diligence and the proficiency of the people who run it. An examination of our Club's facilities and its management since it began twenty five years ago, reflects how well our committees of volunteers have operated. I'm sure all members are proud of our achievements.

During our first twenty five years the Club has seen the reign of nine Presidents. Each, with the assistance of a loyal band of Committee Members and other workers, has steadily improved the Club's facilities, and left their imprint.

These nine Presidents served during the following periods:

<b>1980/84 Barry Furner</b>	<b>1996/98 Peter Trethewey</b>
<b>1984/86 Norm Danvers</b>	<b>1998/99 Gus Meyer</b>
<b>1986/91 Peter Sinclair</b>	<b>1999/02 John Woodrow</b>
<b>1991/92 Paul Lupi</b>	<b>2002/05 Roger Hunt</b>
<b>1992/96 Alan Hocking</b>	

*Committee Members, by years, are listed in the section entitled "Presidents & Committees."*

Most committee members were members of sub-committees responsible for different aspects of management, namely Finance, Grounds, Maintenance, Club Captain, N.D.T.A., Sports Complex, House and Social.

Copies of the Presidents Annual Reports, giving more details of activities, will be kept at the Clubhouse.

## HIGHLIGHTS OVER 25 YEARS

<b>July 1981</b>	<b>Four clay courts completed on new lease.</b>
<b>September 1983</b>	<b>Official Opening of Clubhouse.</b>
<b>August 1987</b>	<b>Upgrading Courts 1&amp;2 to artificial grass \$31,116 (\$6,320 subsidy)</b>
<b>October 1988</b>	<b>Upgrading Courts 3&amp;4 to artificial grass \$34,490 \$6,791 subsidy)</b>
<b>February 1993</b>	<b>Construction Courts 5&amp;6 \$48,2555 (no subsidy)</b>
<b>December 1996</b>	<b>Refurbished Courts 3&amp;4 \$48,299 (no subsidy)</b>
<b>December 2000</b>	<b>Refurbished Courts 1&amp;2 \$28,930 (\$20,000 subsidy)</b>
<b>December 2003</b>	<b>Construction Courts 7&amp;8 \$82,313 (\$66,000 subsidy)</b>

To achieve each stage, as well as maintaining the existing assets, involved considerable work by Club members. This included planning and estimating, grant applications, working bees, and fund raising, while existing grounds and courts and clubhouse still required regular maintenance and cleaning.

## LIFE MEMBERS

From time to time, **Life Membership** is awarded to individual members in acknowledgment of their major assistance to the Club's development and maintenance.

*The current Life Members of the Club are:*

<b>1983</b>	<b>Ted Layt</b>	<b>1996</b>	<b>Irene Blakeney, Fay Furner, Lo Schielein, George Shew</b>
<b>1985</b>	<b>Barry Furner</b>	<b>1998</b>	<b>David Elmes</b>
<b>1990</b>	<b>Ron Blakeney, Estelle Busteed, Ellen Dennien</b>	<b>2000</b>	<b>Colin Regan</b>
<b>1992</b>	<b>Peter Sinclair, Norm Danvers, Hazel Bottomley</b>	<b>2001</b>	<b>Geoff Swartz</b>
<b>1994</b>	<b>Shirley Sinclair</b>	<b>2002</b>	<b>John Morgan</b>

## CLUB PATRONS

**Dr Geoff Bowden** became our first patron when the Club commenced in 1980, and continued as patron until 1983/84. Then Bill Whitehouse, a Club guarantor, was appointed for some two years.

**Grace Pearce** was proposed and approved as patron from 1989/90. Grace had in earlier days played at Elsternwick in Victoria, where she was singles champion. Grace made numerous generous donations to the Club over some thirteen years. Sadly, she passed away recently. The Club has decided not to continue with a patron for the present time.

## AUDITORS

**Ray McCaul** was our first auditor from 1982. Ray was not a member but he volunteered his services free. He continued as auditor until 1985/86.

With the Club's incorporation in 1985, and of course the change in name to Tewantin Tennis Club Inc. , it was a requirement for a registered accountant to do the audit.

**Graham Birch** of Tewantin became our auditor until 1999.

**Hugh Credie** a retired qualified accountant, was engaged by Bill Scott when he was our Treasurer. He donated his time and continued as auditor until 2002/03.

**Christopher Fox** of Fox Richardson Murphy Pty Ltd was engaged as auditor by Col Jeston in 2003/04.

## NEWSLETTER

A Club newsletter was first discussed in 1982, and apparently produced by Club coach and member, Ron Cummins, in September 1982. No further editions were made.

However, in April 1993, under Alan Hocking's Presidency, *"The Tewantin Racquet"* appeared with Club news and the notorious "Fluffy Duck Column". This column began, *"We've welcomed back the first contingent of southern swallows!". "Their stay down south is usually brief- they know the best place to spend the greater part of the year!"*.



## IMPRESSIONS AND MEMORIES

Seven of our foundation members are current members - **Barry and Fay Furner, Ellen Dennien, Estelle Busteed, Daphne and Kim Wall and Laurel Layt** - with Ellen, Estelle and Kim still playing regularly. Many members have some fascinating memories to share, and in so doing, paint a vivid picture of life at The Club in days gone by.

**DAVID AND MARGARET THOMPSON,** *reflect;* "Looking back over the years of enjoyable tennis, we remember many pleasant occasions. One in particular comes to mind, a Melbourne Cup Day. Peter Sinclair, who had a keen eye for a well turned fetlock, decided that all fillies should be paraded before the race, and so they were!



*"Fillies Parade" on Melbourne Cup Day!*

One Melbourne Cup Day, in the days when Shirley Sinclair "managed the Board", a tournament was arranged with player to diligently keep their own score for the prize giving.

However, when prizes were announced, the

first prize went to the player who kept his/her Melbourne Cup Hat on for the longest time!

Geoff Swartz stole the show with a top hat worn at a jaunty forward slope, looking as if he had stepped out of Toulouse Lautrec's painting of the Moulin Rouge! *Peter Lynch's pink shoe laces also took a prize!*

To all the old stalwart members who put together the foundation of this Tennis Club, some 25 years ago, we say a very big *thank you.*

**ESTELLE BUSTEED,** who was *"one of the people right from the time we got up a meeting for getting Tennis Courts"*, remembers using the Tewantin State School whilst waiting for two clay courts to be completed. Once completed, the clay courts proved difficult to play on during the rainy season, so fixtures had to take place at a



*Melbourne Cup Day - Men's Hat Parade  
(l to r) Des Beckett, Keith Jesberg & Geoff Swartz*

nearby private court belonging to her friends Ron and Irene. Estelle has witnessed all the significant changes at Tewantin Tennis Club, including the synthetic grass courts and the growth of the junior programme. She is now a Life Member, but still very much involved in the Social Tennis.

Estelle acknowledges that, *"being on the Queensland Sunshine Coast is a big plus, and probably why our Club has such a mixed membership with people from many Australian States and many countries."*

**HAZEL BOTTOMLEY**, says, "When I

first joined the Club, in the 1980's, we had four clay courts. They had to be prepared for play each time. They had to be rolled by rollers attached to the tractor. Two very dedicated members, Peter Sinclair and

George Shew, performed this role. After they finished, the lines had to be swept and the nets put into position. The nets were rolled up at the end of play and placed into the net bins. The courts were watered before play and during play. About 1987 we installed the first two grass courts on courts 1 and 2. A couple of years later, we installed two further courts on 3 and 4.

We did not have the total finance for these courts. Interest rates were very high at this time, about 17% from the banks, which together with the red tape and bank charges we did not consider this to be an option.

Some members agreed to lend the money, at a very low rate, or interest free. This was fully re-paid after a comparatively short time. *How times have changed!!*

**BETTY WALTERS** remembers, "In the early days, Sunday afternoon tennis was well attended and thoroughly enjoyed. One day I suggested that the ladies could play on a morning during the week, and Tuesday morning was agreed upon.

At first it was ladies only, and beginners were encouraged to come, but when the male players saw what a good time we were having they came along too! And so began

the popular Tuesday morning social tennis.

**Jack Walters** enjoyed his tennis and had been playing for many years. He was always ready to help and advise the juniors and believed that fair play and sportsmanship was the most important factor of the game. After his death in October 1984, Peter Sinclair, in his memory, inaugurated the *Jack Walters Award for Best and Fairest Junior*.

I am happy to donate a trophy each year, and honoured by being invited to present it. The first winner was Michelle Head, who has become a fine player and an admirable role model for her successors to follow.

It has been a joy and a privilege to be a member of the Tewantin Tennis Club, which has been acclaimed by all as *"The Friendly Club"*.

#### **KIM WALL reports:**

Tewantin Tennis Club started playing on the old courts at Tewantin School. The Club entered the Nambour Competition (Saturday afternoon mixed) which was won by Tewantin. They played against Coolum (also their first year) in the finals. The team comprised *Ron Blakeney, Kim Wall, Darryl Marshall, Ron and Hilda Wirth and*

*Marge Brady*. Ron Blakeney's court at Noosaville was used as *home court*.

One match on Coolum's home court, (next to Surf Air), **Darryl Marshall** had a terrible first set. He then went next door to Surf Air and had a double rum! The rest of the afternoon he played the best he did all season! The only problem with the competition was that the trophy had to *stay* in the Nambour Clubhouse.

When our Clubhouse was being built, there were plenty of willing workers –at the start. When the final besser block wall in the western side of the toilets was to be built, there was only a few stayers left – *Kim and Daphne Wall and Barry and Fay Furner*. Jim Sloman was the builder and some of his building gear was stolen from there.

Ted Layt was the official driver of the roller for the courts. It was very hard to turn as was evidenced by the *number of dings in the court fences!*

## “THE FRIENDLIEST CLUB IN THE WORLD”

**W**e have a wonderful group of people at Tewantin who are proud of their Club – no wonder past President, **John Woodrow**, called it the “*Friendliest Club in the World*”.

The most important part of any club is its members, and this is the main reason why the **Tewantin Tennis Club** is so special.

Around 1993/94, the introduction of graded social tennis mornings on *Monday, Wednesday and Saturday*, as distinct from the open social days on *Tuesday, Friday and Sunday*, caused a little disharmony at first. However, with a membership of over 200 active players, it is difficult for all members to mix regularly at tennis, yet there is a need to offer more competitive tennis by grading players.

During his recent illness, Vice President **Ken Melrose**, wrote to Club members, “

*“I would like you all to know how deeply touched I have been by the number of phone calls, cards and enquiries I have received during the last few weeks. Your best wishes and offers of help to Heather and myself*

*have been a constant source of comfort.”*

*Once again thank you on behalf of Heather and myself.”*

I should not have been surprised at these events, because it merely supports once again my frequent assertion that our Club is like a great *extended family*. When someone has problems, support both moral and material are immediately offered.

I pay credit to current President, **Roger Hunt**, and a long line of outstanding past Presidents, for nurturing this happy state of affairs.

This feeling of belonging to a large family is one of the special things about our Club.

George Shew, who in his time was a tireless worker for the Club, always said he wanted to die playing tennis at Tewantin courts! Although he didn't actually do that, he did have the last say – *his ashes were scattered on the court surrounds!*

Many of our colourful characters are remembered. **Dinks Mowbray**, an ex farmer from Zimbabwe, had many favourite

sayings, *"Put one down the scuppers!"*; *"Four all" – when he was down in an 8 game set!*



*Relaxing between sets Christmas 1991  
(Lto r.) Kim Wall, Mary Dodd, Dinks Mowbray & Doug Nelson*

One of our legends, **Claude Wenzel**, described his tennis as *"Faster than a speeding Bull-ant"* and *"Poultry in motion"*.

**Ken Melrose** was renowned for his engaging personality and quick wit. Finding himself waiting for a vacant chair at a busy Social Day, Ken was quick to solve it by shouting, *"Phone for you!"*. Were you ever caught?

Although **Councillor Frank Pardon** is not a Club member, he is well known as the long serving *President of Noosa Sports Complex Committee*, and as an opener of Courts and Awarder of Trophies supreme – and he has a way with words! I recall, at the opening of Courts 7 & 8, when commenting on Council's support for tennis

and Council's help to *connect our clubhouse to sewerage*, he said proudly, *"This is the way Council likes to do its business!"*

The readiness of members to support the Club's development and maintenance is why the Club is in such a sound position today. In those important early days of clay court and clubhouse construction, everyone helped, *including the ladies*. Apart from raising funds, and acting as the keeper of funds, **Fay Furner** towed around a *sled* to *level the ant mounds!*

Another foundation member and hard-worker for the Club is Estelle Busted. Most people today know her as the *"Ball Lady"* for the many years managing ball distribution, although that's not for everyone! As one leading lady player remarked one very wet day, *"I don't like playing with wet, hairy balls!"*

Sometimes pain was ignored. Like when **Ellen Dennien**, on her knees nailing down plastic court lines, nailed her finger to the court – but that didn't stop her! She has been a tower of strength to the Club since its conception; whether it was building courts or the Clubhouse, raising funds or looking after junior development. In later years, she managed the court hire, a rather



thankless job with frequent trips to unlock the courts.

It's useful having many *ex-boy scouts* at The Club! **Lester Holmes**, as a new member attending one of his first days at tennis, heard that a tree limb needed cutting, so without further ado, he said, "*Just a minute I'll get my chainsaw out of the boot!*", and swiftly did the job.

Also, recently **Stewart McConnell** was promptly volunteered by the Secretary (*his wife!*) to roll the road base alongside Court 4, which he duly did.

Apparently, running a Tennis Club is not all easy - understatement! **John Woodrow's** fatherly advice to the incoming President, **Roger Hunt**, was, "*Be careful Roger, being President saps your strength. My tennis has declined during my three years reign*". (handy excuse though!)

Many of our members have achieved fame. In April 2001 **Alan Hocking** and **Ed Dodd** won the doubles at the Australian Veterans Championships, while *Alan was recently second in the World in singles in his age group.* In other fields, two of our members were honoured – **Peter Sinclair** for Service to the Community, and **Mike**

**Hagan** ABC *Garden of the Year 2003.*

Who could forget **Ray Gow** proudly carrying the Olympic torch prior to the Sydney Games? (Also, who could forget the memorable words of a lady player, after visiting Ray in hospital, declaring, "*I didn't recognise him with his trousers on!*")

Tewantin Tennis Club is probably one of the *best known* tennis clubs in Australia, being a favourite destination for many regular inter-State members, who come up for the winter months.

The present day Club is indeed a fitting tribute to the many dedicated members, both past and present, who quietly donate their time and efforts to making Tewantin Tennis Club what it is today - *The Friendliest Club in the World!*



*Melbourne Cup Hat Parade  
Marie McNay, Jessica Griffin & Ellen Dennien*



## FUTURE DEVELOPMENT

Our Club is in a sound position financially to maintain our existing facilities. External funding is available through the Noosa Council and other bodies for new work or upgrading of amenities.

Our Clubhouse is almost twenty-two years old, and since its opening the main changes have been an extension of the kitchen area by the removal of an equipment storage room, an upgrading of the kitchen and the addition to the verandah area. However, a funding application for further Clubhouse extensions has recently been approved.

During this time our membership has increased fourfold. To accommodate this increase, extensions proposed are a six metre section to the east including a covered gas barbecue area, plus additions to the toilet amenities. Hazel Bottomley, who has

been a strong supporter and worker for the Club for twenty years, has made a generous donation to this project.

If our applications are successful it is hoped to commence the work late this year. Our leased area provides room for an additional six courts. (The draft Noosa District Council Complex Plan allows for a total of 14 courts.)

Our previous Junior Development Representative requested that the Club consider the need for hard courts to give junior players training on alternative surfaces. This will be examined by the committee with further developments.

## PRESIDENTS AND COMMITTEES

### BARRY FURNER 1980-1984

#### 1980/81 Committee:

Geoff Flowers (Vice Pres.)  
Coral Anderson (Secretary), Fay  
Furner (Treasurer)  
*Jim Sloman, Ron Blakeney, Joan Furner, Steve  
Jenkins, Marj Brady, Daphne Wall, Mike Ball,  
Michelle Kerr, Doreen Sloman, Bill Pendlebury.*

#### 1981/82 Committee:

D. Marshall (Vice Pres.),  
Coral Anderson (Secretary), Fay Furner (Treasurer),  
*Diana Husoy, Ron Wirth, Joan Furner, Daph Wall,  
Marj Brady, Jim Sloman, Michelle Kerr, Jenny  
Morgan, Hilda Wirth.*

#### 1982/83 Committee:

*Jim Sloman (Vice Pres.), Coral Anderson (Secretary),  
Fay Furner (Treasurer),  
Ellen Dennien, Laurel Layt, Ron Cummins, Ron  
Blakeney, Estelle Busteed.*

#### 1983/84 Committee:

**G. Mould/Ron Cummins (Vice Pres.), S. Mould  
(Secretary), Fay Furner (Treasurer),**  
*Diana Husoy, Ron Blakeney, Daph Wall, Sue Danvers,  
Ellen Dennien. Kim Wall/Peter Sinclair (Club  
Captains - Men) Estelle Busteed/Jenny Morgan (Club  
Captains - Ladies)*

### NORM DANVERS 1984-1986

#### 1984/85 Committee

**Ed Dodd (Vice Pres.), Sue Mould/  
Elise Filshie (Secretary), Mary  
Dodd (Treasurer)**  
*Peter Sinclair, Sue Danvers, Clive Anderson, Gail  
Milligan, Ron Cummins.*

#### 1985/86 Committee:

**Ed Dodd (Vice Pres.), Sue Mould (Secretary),  
Mary Dodd (Treasurer), Peter Sinclair, Sue  
Danvers, Clive Anderson, Gail Milligan, Ron  
Cummins.**



### PETER SINCLAIR 1986 - 1991

#### 1986/87 Committee:

**Ellen Dennien (Vice Pres.),  
Hazel Bottomley (Secretary),  
Daphne Wall (Treasurer),**  
*Adrienne Dick, Norm Danvers, Elise Filshie, Dinks  
Mowbray, George Shew, Estelle Busteed, Ron  
Blakeney (Club Captain).*

#### 1987/88 Committee:

**Ellen Dennien (Vice Pres.), Hazel Bottomley  
(Secretary), Daph Wall (Treasurer),**  
*Ron Blakeney, Norm Danvers, Adrienne Dick, Betty  
Holmgreen, Mavis Magill, Dinks Mowbray, George  
Shew, Jill Williams.*

#### 1988/89 Committee:

Ellen Dennien (Vice Pres.), Hazel Bottomley  
(Secretary), Margaret Thompson (Treasurer),  
*Ron Blakeney, Norm Danvers, Adrienne Dick, Betty  
Holmgreen, Mavis Magill, Dinks Mowbray, George  
Shew, Jill Williams.*

#### 1989/1990 Committee:

Des Beckett (Vice Pres.), Hazel Bottomley  
(Secretary), Margaret Thompson (Treasurer),  
*Ron Blakeney, Norm Danvers, Ellen Dennien, Jenny  
King, Paul Lupi, Col Regan.*

#### 1990/1991 Committee:

Paul Supi (Vice Pres.), Colin Regan (Secretary),  
Margaret Thompson (Treasurer),  
*Ron Blakeney, Norm Danvers, Ellen Dennien, Hazel  
Bottomley, Doug Nelson, Helen Burns.*



### PAUL LUPI 1991 - 1992

#### 1991/92 Committee:

**Peter Sinclair (Vice Pres.),  
Colin Regan (Secretary), Helen  
Hocking (Treasurer),**  
*Ellen Dennien, David Elmes, John Homewood, Geoff  
Swartz, Nancy Oxborough, Laurel Layt and Beth  
Nelson*



## ALAN HOCKING 1992 - 1996

### 1992/93 Committee:

Ray Gow (Vice Pres.) Colin Regan  
(Secretary) Geoff Swartz  
(Treasurer)

*Ellen Dennien, David Elmes, John Homewood, Beth  
Nelson, Paul Lupi, Nancy Oxborough.*

### 1993/94 Committee:

Ray Gow (Vice Pres.) Colin Regan (Secretary)  
Geoff Swartz (Treasurer)

*Beth Nelson, Des Beckett, David Elmes, Doug Hulme,  
John Homewood and Bill Scott.*

### 1994/95 Committee:

Ray Gow (Vice Pres.) Colin Regan (Secretary) Bill  
Scott (Treasurer)

*Beth Nelson, Des Beckett, David Elmes, Doug Hulme,  
John Homewood, Geoff Swartz, Pam Hulme*

### 1995/96 Committee:

Peter Trethewey (V. Pres.) Colin Regan/Gus  
Meyer (Secretary) Bill Scott (Treasurer)

*Des Beckett (Club Captain), Linda Cardno, David  
Elmes, John Homewood, Pam Hulme, Doug Hulme,  
Val Smith, Val Codd, Peter Sinclair, Patrick Sweeney,  
Rosemary Homewood, Barney Costigan.*

## PETER TRETHEWEY 1996 - 1998

### 1996/97 Committee:

Keith Jesberg (V. Pres.)  
Gus Meyer (Secretary) Bill Scott (Treasurer)  
*Doug Hulme (Club Captain), Betty Coe, Patrick  
Sweeney, David Elmes, David Thompson, Dianne  
Peterson.*

### 1997/98 Committee:

Gus Meyer (V. Pres.) Pam Holmes (Secretary) Eric  
Griffin (Treasurer)  
*Col Regan (Club Captain), Betty Coe, Patrick  
Sweeney, David Elmes, David Thompson, Dianne  
Peterson*

## GUS MEYER 1998 - 1999

### 1998/99 Committee:

John Woodrow (Vice Pres.)  
Pam Holmes (Secretary),



Eric Griffin (Treasurer),  
*Col Regan (Club Captain), Betty Coe, Patrick  
Sweeney, David Elmes, David Thompson, Dianne  
Peterson*

## JOHN WOODROW 1999 - 2002

### 1999/2000 Committee:

Jack Wastell (V.Pres) Pam Holmes  
(Secretary) Eric Griffin (Treasurer)  
*Col Regan (Club Captain) Jenny Morgan, Geoff  
Swartz, David Elmes, Jessica Griffin*

### 2000/01 Committee:

Eric Griffin (V.Pres) Narelle Meyer (Secretary)  
Bill Scott (Treasurer)  
*Jock Wastell (Club Captain), Geoff Swartz, David  
Elmes, Jessica Griffin, Roger Hunt, Maree McCray.*

### 2001/02 Committee:

Eric Griffin (V.Pres) Narelle Meyer (Secretary)  
Bill Scott (Treasurer)  
*Jock Wastell (Club Captain), Geoff Swartz, David  
Elmes, Jessica Griffin, Roger Hunt, Maree McCray.*

## ROGER HUNT 2002 - 2005

### 2002/03 Committee:

Ken Melrose (V.Pres)  
Eric Griffin (Secretary) Bill Scott (Treasurer)  
*Jock Wastell (Club Captain), Marie McCray,  
Caroline Shenton, Geoff Swartz, Lester Holmes,  
Jessica Griffin*

### 2003/04 Committee:

Ken Melrose (V.Pres) Isobell McConnell  
(Secretary) Col Jeston (Treasurer)  
*John Schmitt (Club Captain), Marie McCray,  
Caroline Shenton, Geoff Swartz, David Elmes, Jock  
Wastell*

### 2004/05 Committee

Sally Platt-Hepworth (V.Pres), Isobell McConnell  
(Secretary) Jason Reynolds (Treasurer)  
*Doug McConnell (Club Captain), Marie McCray,  
Caroline Shenton, Geoff Swartz, David Elmes,  
Michael Deans*



## CLUB CHAMPIONS

### 'A' LADIES SINGLES

1989	Maree Sanders
1990	Maree Sanders
1991	Michelle Head
1992	Jill Williams
1993	Rita Rowell
1994	Pam Hawkins
1998	Fiona David
2001	Fiona David
2003	-
2004	Tracey Hennig

### 'B' LADIES SINGLES

1989	Helen Barnes
1990	Sandy Regan
1991	Margaret Swartz
1992	Inger Feger
1997	Maria Roper
1998	Jane Ibbs
1999	Kyle Woodward
2000	Kyle Woodward
2001	Narelle Meyer
2002	Anne Hunt
2003	-
2004	Danielle Durham

### 'A' LADIES DOUBLES

2001	Peggy Wallace & Di Peterson
2002	Isobell McConnell & Pam Hawkins
2003	Pauline Harris & Pam Holmes
2004	Margaret Brown & Sally Squires

### 'B' LADIES DOUBLES

1989	Ellen Dennien & Estelle Busteed
1990	Sue Danvers & Jenny King
1991	Ann Lupi & Margaret Swartz
1992	Marliese Rist & Inger Feger
1994	Ellen Dennien & Estelle Busteed
1998	Mary Dodd & Marie McCray
1999	Amber Marshall & Sherry Lindsay
2000	Joan Wastell & Sherry Lindsay
2001	Maria Roper & Noreen Flood
2002	Sally Squires & Margaret Brown
2003	Marie McCray & Pam Hawkins
2004	Grace Cairns & Jacqueline Wilson

### 'C' LADIES DOUBLES

1997	Beth Nelson & Joan Morwood
1998	Beth Nelson & Joan Morwood
2000	Maria Roper & Marion Wood
2003	Maria Roper & Noreen Flood

## CLUB CHAMPIONS

### 'A' MENS SINGLES

1989	Des Beckett
1990	Kim Wall
1991	Alan Hocking
1992	Alan Hocking
1993	Brian Savage
1994	Alan Hocking
1995	Harley Armstrong
1996	Brian Savage
1997	Harley Armstrong
1998	St.John Tyrwhitt
1999	Alan Hocking
2000	St.John Tyrwhitt
2001	Ed Dodd
2002	Ed Dodd
2003	Ed Dodd
2004	Justin Harlow

### 'A' MENS DOUBLES

1989	Des Beckett & Harry Goodfellow
1990	John Portch & John Neild
1991	Milton Gloster & Ed Dodd
1992	Alan Hocking & Kim Wall
1993	Brian Savage & Ed Dodd
1994	Brian Savage & Ed Dodd
1995	Brian Savage & Ed Dodd
1996	Brian Savage & Ed Dodd
1997	Ralph Armitrano & Alan Hocking
1998	St.John Tyrwhitt & Alan Hocking
1999	Ed Dodd & Alan Hocking
2000	Ed Dodd & Alan Hocking
2001	Ed Dodd & Alan Hocking
2002	Brian Wigney & Barry Furner
2003	Stewart McConnell & Brian Wigney
2004	Justin Harlow & Tom Whittaker

### 'B' MENS SINGLES

1989	David Elmes
1990	Stevie Mills
1991	David Elmes
1992	Ray Gow
1993	Paul Peterson
1994	Geoff Swartz
1995	Bob Wilson
1996	-
1997	Robin Cardno

### 'B' MENS DOUBLES

1989	George Shew & David Elmes
1990	Doug Nelson & Ray Gow
1991	Colin Regan & David Elmes
1992	Colin Regan & David Elmes
1993	Peter Trethewey & Doug Hulme
1994	Paul Peterson & David Neal
1995	Robin Cardno & Keith Jesberg
1996	Warren Jukes & David Elmes
1997	Bob Wilson & Terry Hogan

**'B' MENS SINGLES Cont'd**

1998	Robin Cardno
1999	Robin Cardno
2000	Tom Ibbs
2001	Jonathan Hall
2002	Bill Sheehan
2003	Gareth Bertram
2004	Peter Gruescu

**'C' MENS DOUBLES Cont'd**

1998	David Elmes & Craig Goodfellow
1999	Warren Jukes & David Elmes
2000	Warren Jukes & David Elmes
2001	David Nichol & Ian Rawson
2002	Roger Hunt & Stewart Mc Connell
2003	Roger Hunt & David Elmes
2004	John Pfeifer & Gareth Bertram

**'C' MENS SINGLES**

2000	Tristan Smith
2001	-
2002	-
2003	-
2004	-

**'C' MENS DOUBLES**

1997	Tom Hunter & Barry Milligan
1998	Robin Carno & Andrew Cardno
1999	-
2000	-
2001	Tom Hunter & Colin Lange
2002	-
2003	-
2004	-

**'A' MIXED DOUBLES**

1989	Elise Filshie & John Portch
1990	Elise Filshie & John Portch
1991	Sandy Regan & David Elmes
1992	Jill Williams & John Williams
1993	Penny Trethewey & Alan Hocking
1994	Viv Matthews & Paul Peterson
1995	Pam Holmes & David Elmes
1996	Viv Matthews & St.John Tyrwhitt
1997	Carolyn Healey & Alan Hocking

**'B' MIXED DOUBLES**

1989	Dawn Armitage & Des Beckett
1990	Daphne Wall & Stevie Mills
1991	Marliese Rist & Bill Lawrie
1992	Marliese Rist & Bill Lawrie
1993	Patsy Schmitt & Rob Schmitt
1994	Natalie Wall & Kim Wall
1995	Marliese Rist & Keith Jesberg
1996	Valerie Codd & Bill Neal
1997	Valerie Codd & Pat Sheridan



**'A' MIXED DOUBLES Cont'd**

1998	Carolyn Healey & Alan Hocking
1999	Pam Holmes & Ed Dodd
2000	Carolyn Healey & Alan Hocking
2001	Viv Matthews & St.John Tyrwhitt
2002	Fiona David & Alan Hocking
2003	Viv Matthews & St.John Tyrwhitt
2004	Viv Matthews & St.John Tyrwhitt

**'B' MIXED DOUBLES Cont'd**

1998	Linda Cardno & Robin Cardno
1999	Marie McCray & Alan Turner
2000	Pam Hawkins & David Elmes
2001	Pam Hawkins & Warren Jukes
2002 TIE	Jennifer Rayner & John Schmitt Noreen Flood & Doug Hulme
2003 TIE	Pauline Harris & David Elmes Anne Hunt & Zak Roslie
2004	Danielle Durham & Peter Gruescu

---

**'C' MIXED DOUBLES**

1997	Christine Buckridge & Robert Wilkinson
1998	Beth Nelson & John Homewood
1999	-
2000	Beth Sparling & John Homewood
2001	-
2002	Diana Husoy & Gisle Husoy
2003	Marian Wood & Ted Inggall
2004	Anne Jetson & Col Jeston

---

## JUNIOR CLUB CHAMPIONS

### GIRLS SINGLES

1989	Elizabeth Angus
1990	Natalie Wall
1991	Elizabeth Angus
1992	Kellie Stirton
1999	Amber Marshall
2000	Sarah Kirvan
2001	Krysten Boyle

### GIRLS DOUBLES

1989	Elizabeth Angus & Linda Angus
1990	Natalie Wall & Katrina Wall
1991	Natalie Wall & Katrina Wall
1992	Kellie Stirton & Belinda Brown

### BOYS SINGLES

1989	Stevie Mills
1990	Stevie Mills
1991	Stevie Mills
1992	Phillip Massoud
1998	Tom Ibbs
1999	Jonathon Hall
2000	Jonathan Hall
2001	Anthony Brown
2002	Anthony Brown
2003	Zac Roslie
2004	Justin Harlow

### BOYS DOUBLES

1989	Christopher Woodward & Joshua Grinter
1990	Chris Boughton & Nathan Garvey
1991	Christopher Woodward & Joshua Grinter
1992	Phillip Massoud & Bo Leishman
1999	Alex Hall & Anthony Brown
2000	Alex Hall & Jonathan Hall

## ACKNOWLEDGEMENTS

Many thanks are extended to the following people for their invaluable help in compiling this history of our Club:

**JOHN MORGAN** - *Our talented club artist, signwriter and gardener, who designed our Club Logo and the cover of this publication. The back cover features one of John's Melbourne Cup posters which have been a feature of our Melbourne Cup Socials.*

**GEORGE PEARCE** - *A local Tewantin history buff and a former member of the original Tewantin Tennis Club, who assisted with information on the first club.*

**RHONA VICKERS** - *Our newsletter editor, who thankfully for me, volunteered to assist, and proceeded to type my very rough draft, and helped to lick it into shape.*

*Thanks also to many of our members who helped with photographs and information, especially those who provided interesting memories.*

TENNIS  
DAY

BBO  
LUNCH

SWEET  
STAKE  
TV

HAT  
TRADE

MEYERNE  
CUP

*anyone for tennis?*

AT TEWANTIN TENNIS CLUB